



MISC BERHAD

User Manual
(version 1.0)

for

Citrix Access Citrix BDC & Citrix BDC

DETAILS

Project Title:	Citrix BDC & Citrix BDC
Document Title:	Citrix BDC & Citrix BDC
Document Issue Date:	

DOCUMENT CONTROL

Version	Date	Author	Description
1.1			
1.2			
1.3			
1.4			
1.5			

APPROVAL

Name (Position)		

1 INTRODUCTION

1.1 Purpose

- Via Remote VPN Access – OpenVPN Client
For all Applications (MISC Portal, E-Biz, Service Desk, Insurance System, Mahrina (Danaos), SAP, Sealer, Land Logistics, Sea Liner, Dataloy, AMOS), Email and Common folder access.

1.2 Intended Audience

- Via Citrix Webpage for Applications in Dayabumi, Petronas Twin Tower & Bangi Data Center

New Citrix Farm

<https://ctxapps.misc.net.my>

- *For MISC Portal, E-Biz, Service Desk, Insurance System, Mahrina (Danaos), SAP, Sea Liner application*
<https://ctxweb.misc.net.my> - *For Sea Liner application*
- New Citrix farm recently implemented for 100 concurrent users (Pilot implementation)

2 BUSINESS PROCESS

2.1 Open the Citrix DYB (dayabumi)

2.2 Open the Citrix BDC :

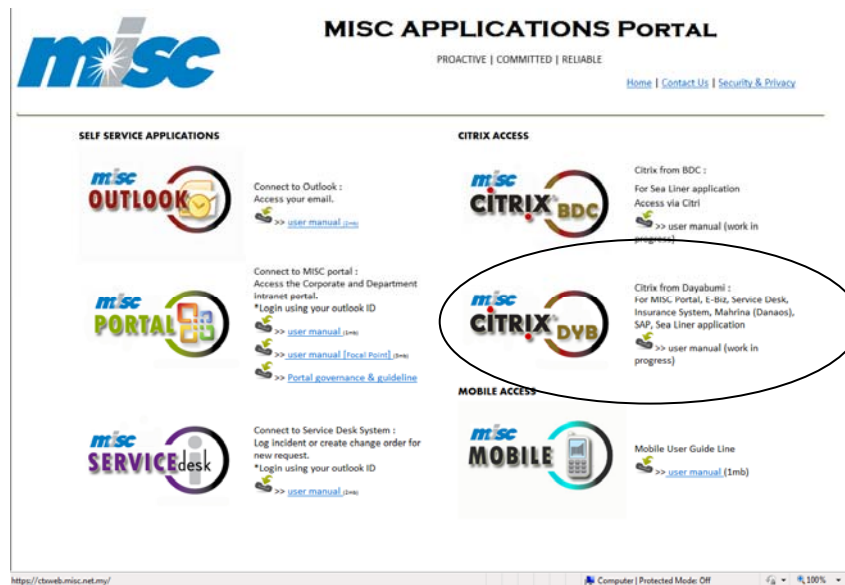
2.1 Open the Citrix DYB (dayabumi)

Step 1 :

Open the <http://www.misc.net.my>

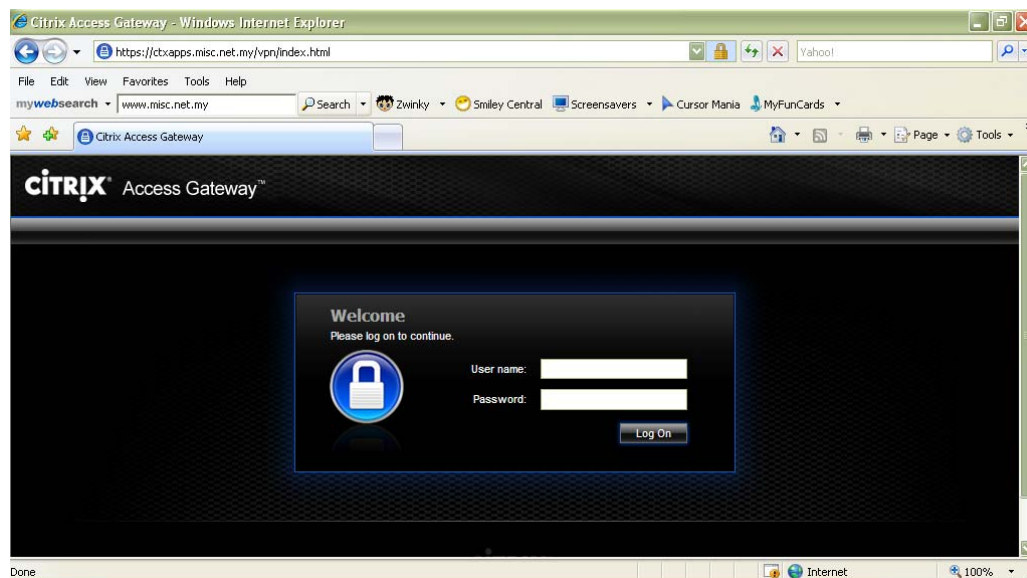
Step 2 :

Click the 'Citrix DYB' icon



Step 3 :

Please fill the user name and password to login.

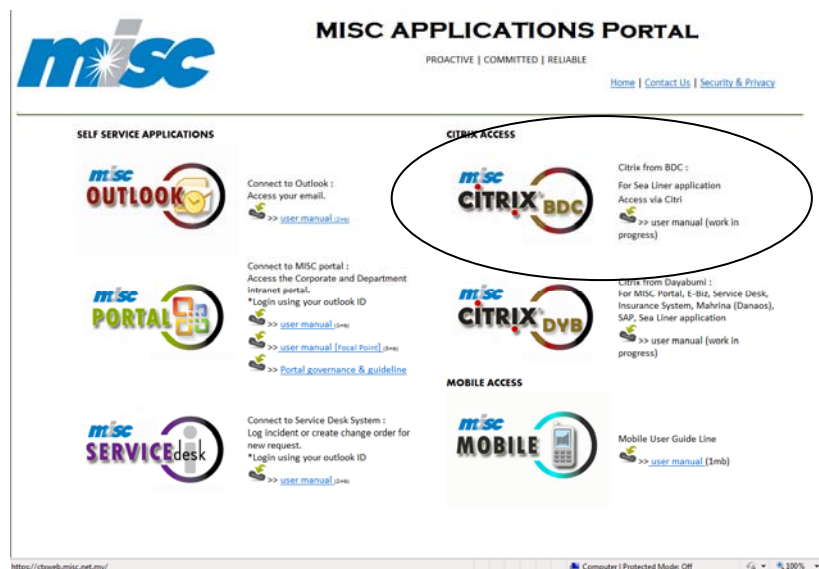


<https://ctxapps.misc.net.my/vpn/index.html>

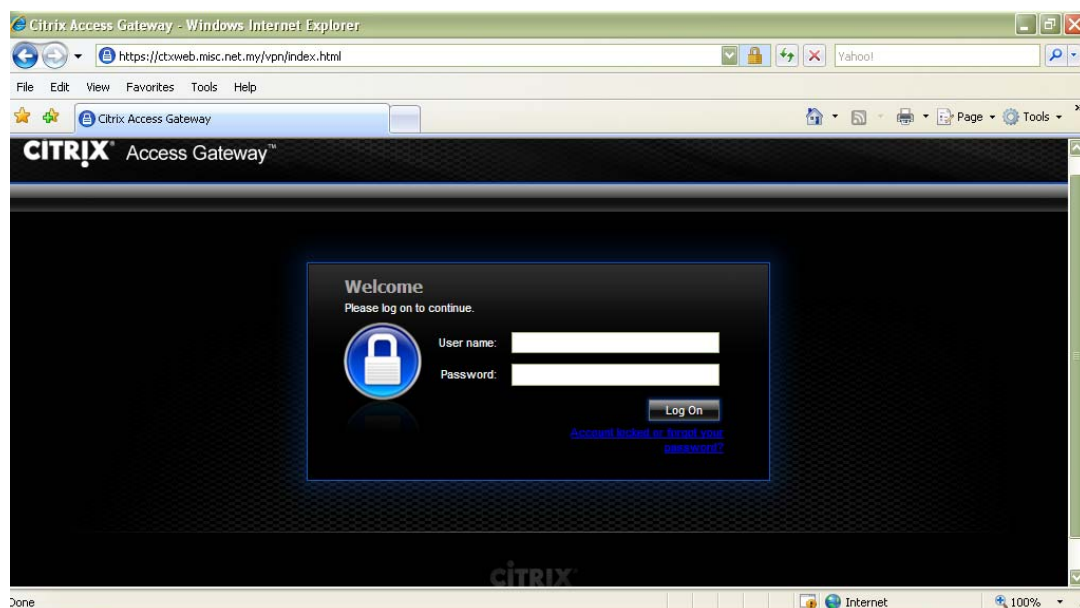
2.2 Open the Citrix BDC :

Step 1 :
Open the <http://www.misc.net.my>

Step 2 :
Click the 'Citrix BDC' icon



Step 3 :
Please fill the user name and password to login



<https://ctxweb.misc.net.my/vpn/index.html>